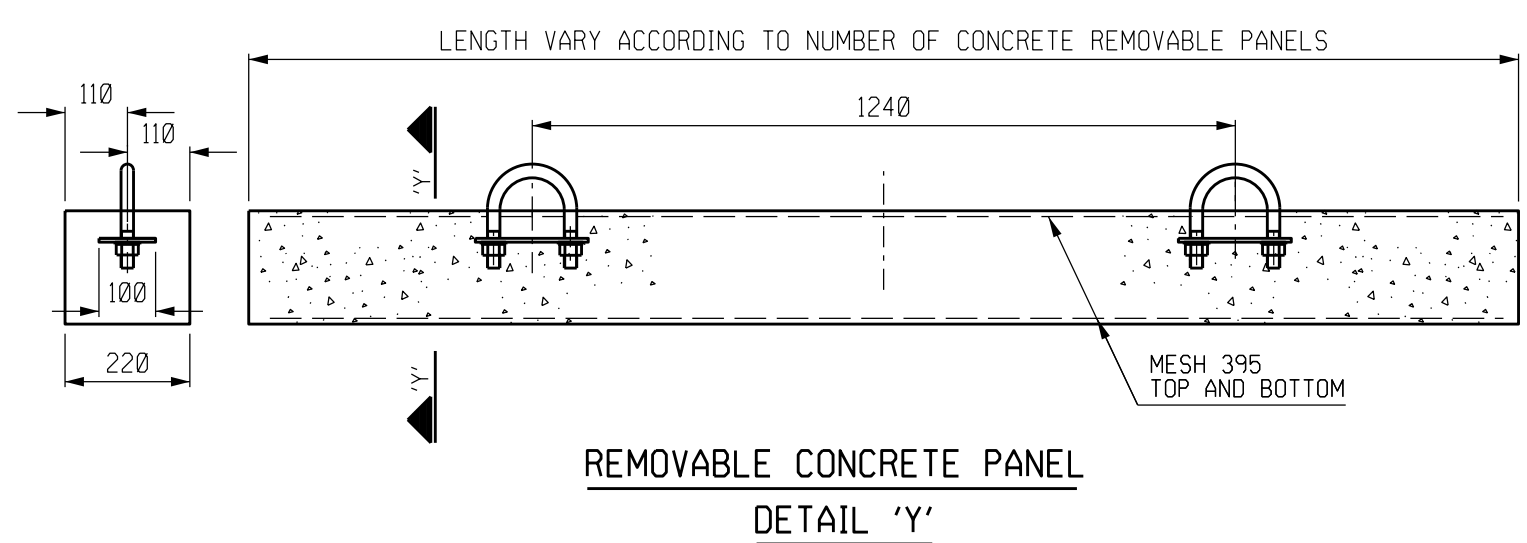
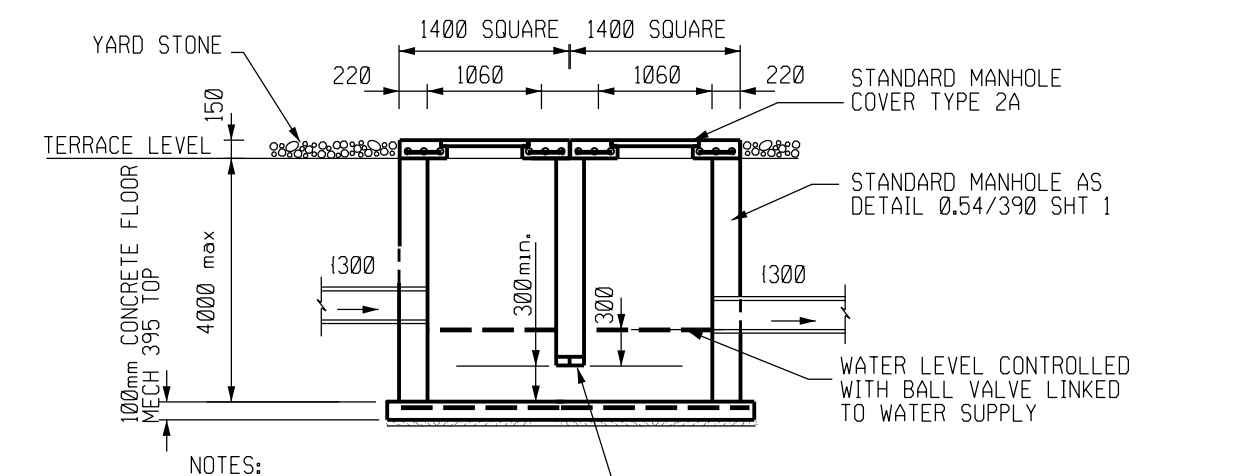
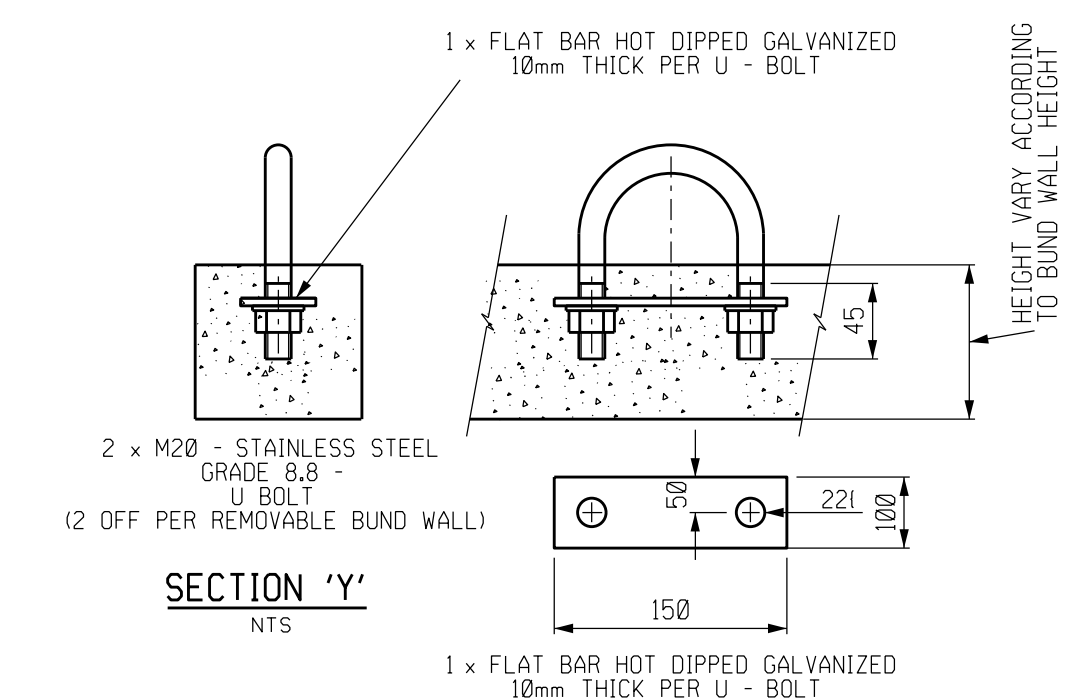
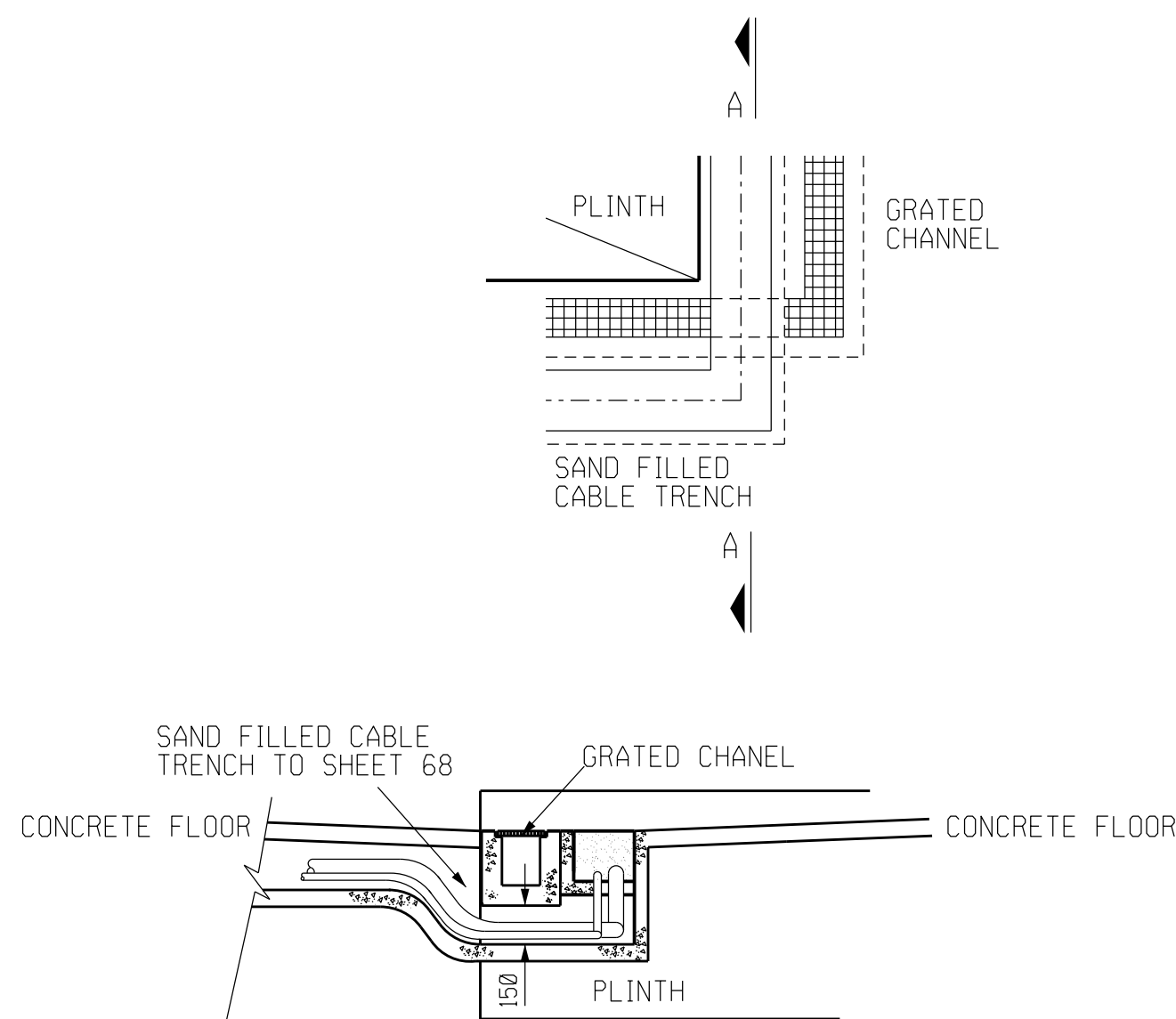


FOUNDATION PLINTH TOLERANCES
TRANSFORMER PLINTH TOP FINAL LEVEL TO BE LEVEL WITHIN A TOLERANCE OF PLUS MINUS 3mm IN 3m IN ALL DIRECTIONS LEVELS TO BE CONFIRMED WITHIN 5 DAYS AFTER CONSTRUCTION.


LEGEND :

- NEW BRICK WALL SEE DRG 0.54/390 SHT 46
- CABLE TRENCH ENTRY DRG 0.54/390 SHT 49b
- SAND FILLED CABLE TRENCH INSIDE TRFR BUND AREA DRG 0.54/390 SHT 68 INSIDE BUND AREA
- SINGLE CABLE TRENCH 0.3/390 SHT 15
- GRATED CHANNEL SEE DRG 0.54/390 SHT 70 GRATED CHANNEL SUMP DRG 0.54/390 SHT 71
- MANHOLE SEE DRG 0.54/390 SHT 1
- 1300 CLASS 500 SPIGOT AND SOCKET PIPES WITH NEOPRENE RINGS LAID ON CLASS B BEDDING
- SUMP SEE DRG 0.54/390 SHT 69 (AUX. TRFR)
- SAFETY FENCE DETAILS 0.54/4963 SHT 1-5

- NOTES:**
- CONSTRUCTION WORK TO COMPLY WITH SANS 1200
 - CONCRETE STRENGTH AT 28 DAYS/STONE SIZE: BLINDING = 15/19 FOUNDATION = 25/19 CONCRETE Cased IN FOUNDATION: SLUMP VALUE 75mm (TOLERANCE ± 25mm)
 - MIN. CONCRETE COVER TO REINFORCEMENT = 50 mm.
 - FOUNDATIONS TO FOUND ON GROUND BEARING CAPACITY OF MIN. 150kPa.
 - ALL TOP EDGES OF CONCRETE TO HAVE 20x20 CHAMFERS. ALL TOP EDGES OF CONCRETE ABOVE GL. TO HAVE 25mm CHAMFER AT 45°
 - BUND FLOOR TO FALL AT A MIN. SLOPE OF 1:50 TOWARDS GUTTER OR SUMP
 - FOR CIVIL CONSTRUCTION DETAILS SEE 0.54/390
 - NEW H.D. BOLTS SUPPLIED BY CIVIL CONTRACTOR COMPLETE WITH NUTS AND WASHERS TO BE HOT DIPPED GALVANIZED TO SABS 763 CHEMICAL ANCHORS OF 132kV SA TO BE FISHER RG M30- 4 OFF FOR EACH FND. BOLTS TO BE FIXED WITH RESIN ANCHOR CAPSULES. TO SUPPLIER SPECIFICATIONS SETOUT TO 0.54/4358 (BOLTS NOT CASTED INTO RUNWAY) FOR POSITION OF SA BOLTS SEE BAY LAYOUT DRWG.
 - STEEL TEMPLATE TO BE USED FOR SETTING H.D. BOLTS
 - REMOVABLE CONCRETE PANELS TO BE INSTALLED AFTER TRFR HAS BEEN INSTALLED. SEE DETAIL 'Y'. EXPANSION JOINTS BETWEEN PANELS
 - FOR EXPANSION JOINTS BETWEEN FLOOR/BUNDWALL AND FLOOR/GUTTER SEE DRG. 0.54/390 SHT 46 & 40.
 - CONCRETE FINISH : TOP OF FOUNDATION - WOODFLOAT FINISH S-SIDES - SMOOTH OFF SHUTTER FINISH
 - ALL GRIDS AND ANGLES TO BE HOT DIPPED GALVANISED.
 - CENTER LINES OF PLINTH TO BE PERMANENTLY MARKED BY CONTRACTOR. FOR PLINTH POSITION TO BE CONFIRM ON FOUNDATION LAYOUT
 - 4x160 PVC PIPE PER TRENCH TO BE CAST INTO RUNWAY AS PER W.W.
 - ALL LEVELS TO BE CONFIRMED ON SITE
 - BUND WALLS TO BE CONSTRUCTED WITH CLAY BRICKS CLASS FBX TO SANS 227 SPECIFICATION IN CLASS II MORTAR AS PER DETAIL ON DRG 0.54/390 SHT 46.



**DETAILED DESIGN
NOT FOR CONSTRUCTION**

0 FIRST ISSUE										E45 UPGRADE BARRIER FENCE LAYOUT				
REV	REVISION DESCRIPTION				CROWN	CHKD	DATE	06 DRAINAGE LAYOUT						
<div>APPROVED BY</div> <div> Eskom</div>								07 KEY PLAN						
								08 IMPROVED HOSE POND FENCE LAYOUT						
								Les23P04-SE-D41						
								09 REVISION						
								Eskom Holdings SOC Ltd Reg No 2002/015527/30						
CHECKED BY														
DATE														
DRAWN BY														
Omnia														
DATE 02/2025														
SCALE										Les23P04-SE-D41				
										SHEET NUMBER		REVISION		
										1		0		